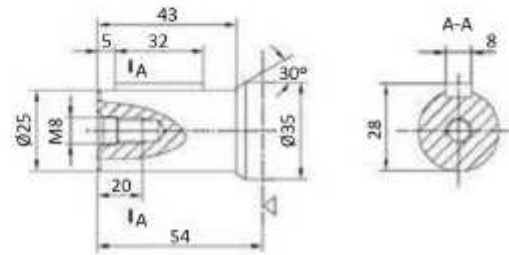
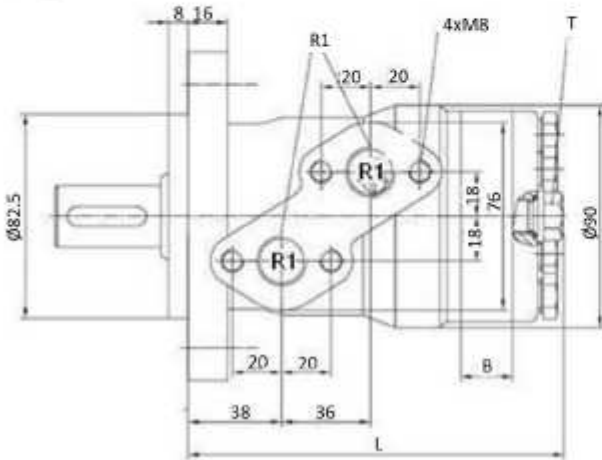
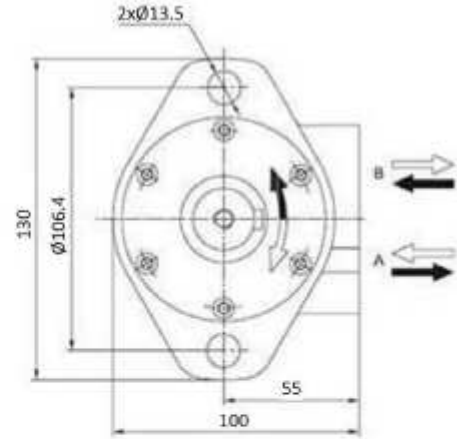
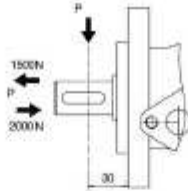
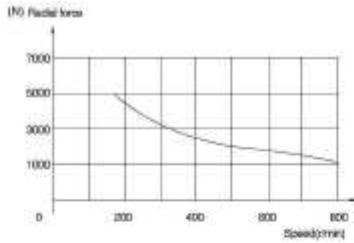


MOMP type motor



Shaft: cylindrical shaft, diameter 25 mm

Max. flow interm.: MOMP50 =60 (l/min); Others=75 (l/min)

T: drainage line, thread 1/4"

(Power in kW)

(Torque in daN.m)

| Part nº | R1 | Max. flow (l/min) | Max. press. cont. | Max. Peak press. | cm ³ /rev | R.P.M. cont. | R.P.M. int. | Max. torque cont. | Max. torque peak | Max. power cont. | Max. flow cont. | B | L |
|---------|----------|-------------------|-------------------|------------------|----------------------|--------------|-------------|-------------------|------------------|------------------|-----------------|-----|-----|
| MOMP40 | 1/2" BSP | 35 | 100 | 170 | 40 | 875 | 1125 | 4,5 | 7,5 | 6 | 35 | 5,5 | 140 |
| MOMP50 | 1/2" BSP | 40 | 140 | 210 | 50 | 800 | 1000 | 8,9 | 13 | 7 | 40 | 7 | 141 |
| MOMP80 | 1/2" BSP | 60 | 140 | 210 | 80 | 760 | 940 | 14,9 | 21,9 | 10,1 | 60 | 11 | 145 |
| MOMP100 | 1/2" BSP | 60 | 140 | 210 | 100 | 600 | 750 | 19 | 26,5 | 10,3 | 60 | 13 | 147 |
| MOMP125 | 1/2" BSP | 60 | 140 | 210 | 125 | 485 | 600 | 23,4 | 36,2 | 10 | 60 | 16 | 150 |
| MOMP160 | 1/2" BSP | 60 | 140 | 210 | 160 | 380 | 475 | 31 | 42,6 | 10 | 60 | 21 | 155 |
| MOMP200 | 1/2" BSP | 60 | 135 | 210 | 200 | 302 | 380 | 35,9 | 54,5 | 9,6 | 60 | 26 | 160 |
| MOMP250 | 1/2" BSP | 60 | 105 | 175 | 250 | 240 | 302 | 35,1 | 58,5 | 7,4 | 60 | 32 | 166 |
| MOMP315 | 1/2" BSP | 60 | 80 | 160 | 315 | 190 | 235 | 34,2 | 68,4 | 5,6 | 60 | 42 | 176 |
| MOMP400 | 1/2" BSP | 60 | 65 | 140 | 400 | 150 | 190 | 34,8 | 68,8 | 4,6 | 60 | 52 | 186 |

*** Review attached PDF***

*Intermittent operation rating applies to 6 seconds of every minute.

*Peak load rating applies to 0.6 seconds of every minute.