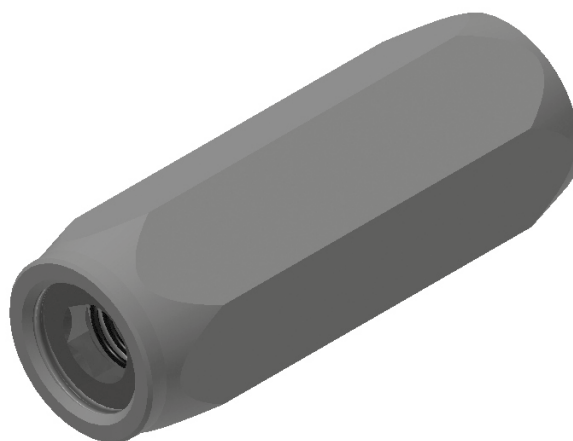


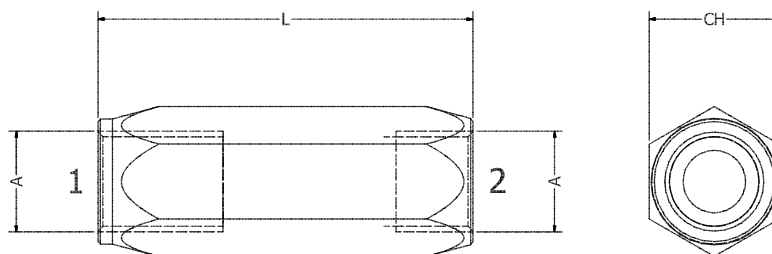
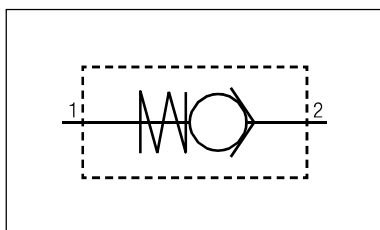
VALVOLA UNIDIREZIONALE

CHECK VALVES POPPET AND BALL TYPE

X	Collettore/Body	Y	Molle/Spring	W	Tipo/Type	Z	Materiale/Material
1	1/4	1	0,5 bar	1	Sfera/Ball type	1	Acciaio/Steel
2	3/8	2	3 bar	2	Spillo/Poppet type	2	Aisi 316/Stainless steel
3	1/2	3	6 bar				
4	3/4	4	10 bar *				
5	1"	* Secondo disponibilità					
6	1" 1/4						
7	1" 1/2						



SCHEMA IDRAULICO HYDRAULIC DIAGRAM



TIPO/TYPE	A BSP	L	CH	PORTATA MAX/MAX FLOW	PRESSIONE MAX/MAX PRESSURE
VU/14	1/4	60	19	20 lt/min	400 bar
VU/38	3/8	68	24	35 lt/min	400 bar
VU/12	1/2	78	30	55 lt/min	350 bar
VU/34	3/4	90	36	90 lt/min	300 bar
VU/1	1	106	46	130 lt/min	300 bar
VU/114	1 1/4	123	50	240 lt/min	250 bar
VU/112	1 1/2	142	65	330 lt/min	230 bar

APPLICAZIONE/APPLICATION

Le valvole VU sono utilizzate per permettere il passaggio del flusso libero in un'unica direzione. Tarature speciali a richiesta.

*VU valves are used to allow the passage of free flow in one direction.
Special settings on request.*